

LKF-Automotive HD

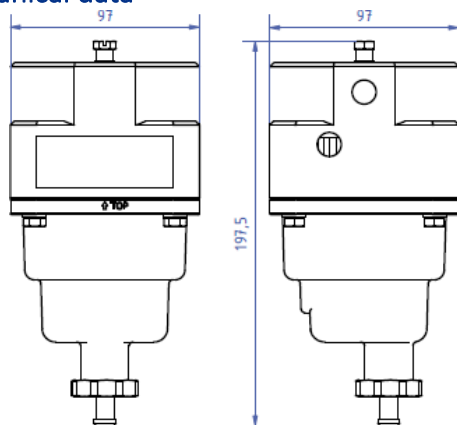
Coalescence filter



Quick Guide

The LKF-Automotive HD is the rugged version of our proven LKF coalescence filter. It reliably removes suspended particles and water from fuel. Thanks to its robust design and durable materials, it is ideally suited for environments with harsh weather conditions and high system pressures.

Mechanical data



Performance data

Empty weight:	< 1,3 kg
Ambient temperature	-40 °C ... 85 °C
Fixing points	4
Mounting bore	M8
Thread depth	10 mm
Tightening torque	17 Nm ± 3 Nm
Media connectors	4
Internal thread	M14x1,5
Seal according	ISO 9974-1
Tightening torque	25 Nm ± 5 Nm
Water sensor connector	
Internal thread	PG7
Tightening torque	Hand-tight
Operating pressure	
Continuous	-0,8 bar ... 15 bar
Pressure drop	< 40 mbar (bei 3 l/min)
Volume flow (V _{max})	< 3 l/min
Separation process	Coalescence + hydrophobic barrier
Degree of water separation	> 95 % according ISO 16332
Available pore sizes	10 µm, 6 µm, 3 µm
Filter surface area	approx. 10 dm ²
Water holding capacity	approx. 70 ml
Water alarm at (optional)	approx. 60 ml

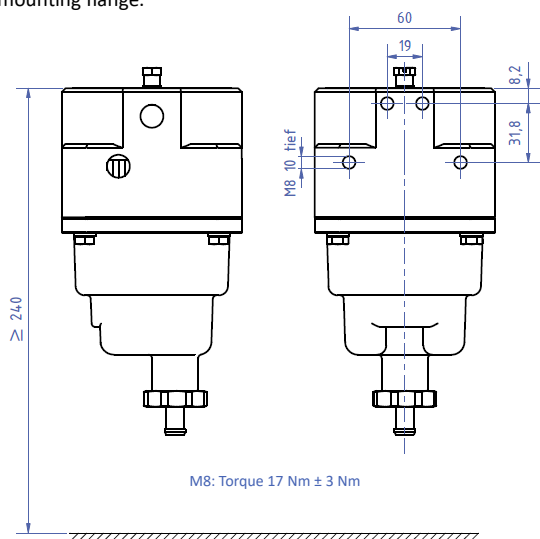
Mechanical connections



- | | | | |
|----------------------|------------------------------------|-----------------------|----------------------|
| 1 Media outlet, left | 3 Screw-in thread for water sensor | 5 Bleed screw | 7 Media inlet, right |
| 2 Media inlet, left | 4 Nozzle for Drain hose | 6 Media outlet, right | |

Mounting

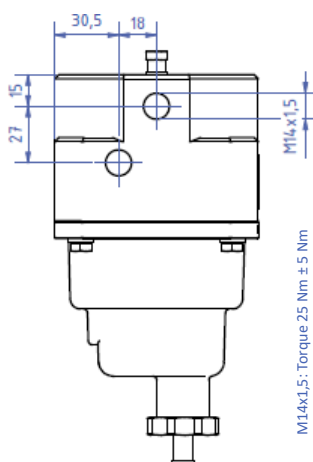
The filter is mounted using four metric screws that are threaded into the mounting flange.



- ▶ The filter is undamaged and the package content is complete.
 - ▶ A clearance height of at least 240 mm is existing at the mounting location.
 - ▶ The filter can be mounted so that sufficient space remains under the drain nozzle for the connection of the drain hose.
 - ▶ The mounting flange does not protrude over the mounting surface.
1. Drill four holes according to the specified hole pattern.
 2. Deburr bores.
 3. Insert all four screws through from the rear side of the mounting surface and screw hand-tight into the mounting flange of the filter.
 4. Align filter so that its axis is vertical.
 5. Fix filter and tighten all screws with the admissible torque.
- = The filter is mounted.

Connection

The media connectors are designed as tapped holes according to ISO 9974-1. Sealing plugs or connectors, which correspond to ISO 9974-2, can be screwed into them.



- Media inlet:** Connection for the fuel pipe from the deepest point of the tank.
- Media outlet:** Connection for the fuel pipe to the injection system.
- Nozzle for drain hose:** For simpler drainage of the filter, a hose which is suitable for the medium can be slid on.
- Screw-in thread for water sensor:** A water sensor which is available as an accessory can be screwed into this screw tap, where the sensor must be evaluated by additional electronics. This allows a message to be generated when the filter needs to be drained.

Initial commissioning



Before initial start-up, make sure that all 4 lateral connections and the water sensor connection (bottom) are tightly closed. In addition, the water drain and the vent screw must be screwed shut and the container must be completely closed by means of a locking ring (The white "TOP" marking on the ring must point upward, and all four screws on the ring must be tightened to the specified torque).

Ordering information

REF	Description
06 3941	LKF-Automotive HD with filter element 3µm
06 3942	LKF-Automotive HD with filter element 6 µm
06 3943	LKF-Automotive HD with filter element 10 µm
06 3738	Filter element 3 µm
06 3739	Filter element 6 µm
06 3719	Filter element 10 µm
06 3746	Seal set (2x O-ring for drain valve, 1x O-ring for container)
06 3748	Container with drain valve and seal set
06 1558	Plug PG7 with O-ring
06 3681	Plug M14x1,5 with profile seal

Documentation

Special features of options for this product can be found in the operating manual.

 In Ihrer Sprache auf
 In your language at

